

WANTED: People with the vision to support our creative work in enabling transformed lives within a flourishing community



Could you join our fun and committed board of trustees?

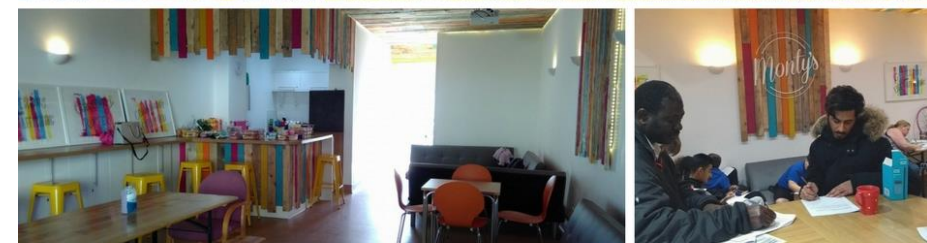
Monty's Community Hub is a community development charity, social enterprise and fresh expression of church – all rolled into one. Monty's started life in 2013, when a group of volunteers from the local community came together to save the old youth centre from closure following statutory funding cuts. According to the Office for National Statistics, this is one of the most deprived area in the UK; based at the heart of the community, Monty's was soon reimagined as an inclusive 'community hub' open to people of all ages and backgrounds, and has since grown to include over thirty volunteers running a dozen weekly activities and regular community events for hundreds of people. **We are now seeking to grow our Board of Trustees, and are looking for people with the vision to support our creative work in enabling transformed lives within a flourishing community on the edge of Southampton.**

WHAT DO WE DO?

"Community Development" – taking a Community Development approach means that rather than trying to 'do' good things 'to/for' our community, at Monty's we recognise that real transformation comes from within. As such, we work to create a supportive context in which residents are enabled to identify the needs and opportunities within their own community, and are encouraged to develop their own creative responses to these needs and opportunities; working together within our community for positive change. Some of the current responses include: youth clubs, sports groups, homework support, mentoring, holiday activities, community events, community newspaper, skills development, and various social, support, wellbeing, parenting and advice groups.

"Social Enterprise" – we also run Monty's Bike Hub, a social enterprise aiming to support all things cycling on the east of Southampton, while enabling people to be empowered with new skills and opportunities. We believe bikes are fantastic tools for education and engagement so we run a growing range of innovative projects, focusing especially on those who

are vulnerable or excluded. As well as generating income through recycling old bikes, running events and led-rides, and offering a variety of other cycling services, we also work to find effective routes into education and employment for our members.



"Fresh Expression of Church" – we also host Monty's Church, a fresh expression of church, through which we explore new and creative ways to encourage unchurched people to explore the possibilities of God for themselves. Journeying alongside those who may be spiritual but are unlikely to ever go to traditional church, we explore new ways of being church that are genuinely meaningful and accessible to our neighbours and our community.



HOW DID IT START?

Monty's started life in 2013, when a group of volunteers from the local church and community came together to save the old youth centre from closing due to statutory funding cuts. Monty's was soon renamed and reimagined as an inclusive 'community hub' open to people of all ages and backgrounds, and established as a community development charity. Monty's is based in a shop unit at the heart of the local neighbourhood; an area of significant deprivation, with high levels of crime and low levels of income, employment and education. The idea is to be a space where people in our community can gather and grow together, share life, make new friends, learn new skills, improve job prospects, or get help and advice.

Five years down the line, we have over 30 local volunteers supported by two part-time staff, who run a dozen weekly groups and other regular events – with babies, children, young people, families, adults, and older people! At the beginning of 2017 we had a complete refurbishment of the community hub and reopened to great fanfare. Although of course the important stuff isn't the programme or the building – but the people! **We're continually delighted to see people growing in their capacity for personal development; young people blooming in self-esteem and aspiration; people truly connecting with themselves, others, and the divine; and so many local residents taking responsibility for collective flourishing in our community. This is why we do what we do!**

WHAT ARE OUR VISION & VALUES?

Our vision is: **"to enable the personal, social and spiritual growth of local residents, in partnership with our local community, so that we can all enjoy abundant life within a flourishing neighbourhood."** Supported by the local church, we're faith-based but not faith biased; Monty's Community Hub is fully inclusive and welcomes people of any faith or none. Inspired by Jesus, we're committed to being: **(1) Community-rooted**; based in our community, encouraging positive involvement within the community, and contributing to good relationships in all we do; **(2) Open & Inclusive**; actively promoting equality of opportunity, challenging discrimination, and celebrating diversity; **(3) Compassionate & Open to God**; being open and honest in all our relationships, caring and loving as Jesus did and still does today; **(4) Generous & Life-affirming**; equipping and enabling people to live fulfilling lives, recognising and developing their own potential.

WHAT ARE WE LOOKING FOR IN FUTURE TRUSTEES?

Our board of trustees currently has six members – including qualified youth workers, community development workers, teachers, artists, a charity HR manager, the assistant principal of the local secondary academy, and a former member of our youth club. Most of our trustees live within a couple of miles of the community hub, and have strong connection to the area. Our treasurer has recently chosen not to renew his term in 2018. Our very active chair of trustees is seconded from the Church of England, and works with the Monty's team for two days each week.

We are now looking for up to five new trustees (including a new treasurer) to join our committed team. Our role as trustees is to oversee the charity, and to support its work by looking after all issues of policy, procedure, finance and governance. We also have a crucial role in setting the vision and strategy of the charity. There's a fair amount of paperwork, but it's exciting to see our efforts bear such incredible fruit in the community. We take our responsibilities as trustees very seriously, but our meetings are reasonably informal, with lots of laughter and real friendships.

TRUSTEES: We are looking for up to five new trustees – we're particularly keen to connect with people who have experience in finances, fundraising, training, and/or business development. Trustees will need to be available for our trustee meetings (usually every three months, usually under two hours on a weekday evening) and able to prepare or review a handful of documents for each meeting. (If you are interested in becoming treasurer, or more actively engaging with fundraising, training, or business development, naturally this will require more of your time – which can be discussed in advance and reviewed over time.) Trustees are also often invited to Monty's events and activities; you are welcome to join in, but your participation is entirely optional.

TREASURER: We're looking for someone able to oversee our finances (including payroll, authorising expenses, paying bills, and preparing financial reports) for a couple of hours a week. Our current treasurer has agreed to stay on until May to oversee the transition to a new treasurer, and will be willing to help with any questions afterwards.

If you might be interested in joining our wonderful team, or if you'd simply like a chat to find out more about the possibilities, contact [Jon Oliver \(Chair\)](mailto:Jon.Oliver@montys.org.uk) on [023 8178 2238](tel:02381782238) / montys.sholing@gmail.com / www.montys.org.uk